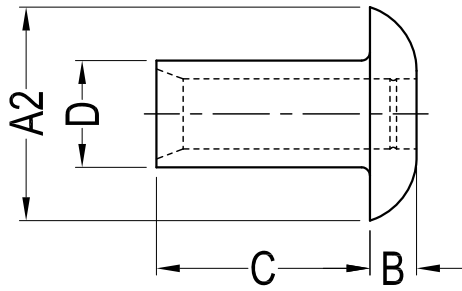
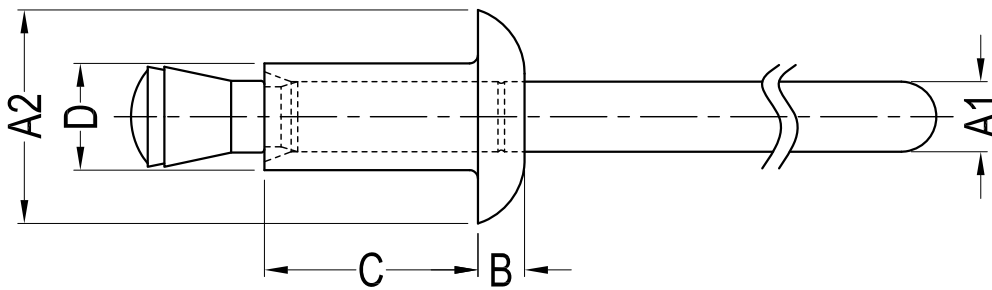
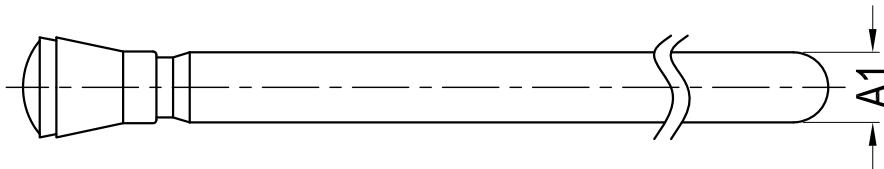


REV	DESCRIPTION	DATE	CHECK
A1	Reduce the material for the Inner hole	2015-6-8	
A2	Mechanical property parameter change.	2015-12-8	



Notes:

- 1.RoHS Compliant.
- 2.Patent.
- 3.Body Color: See Table
Pin Color: Clear.



Material:PA6 UL94 V2(Body)+PC UL94 V2(Pin) Unit:mm

Part Name	Black-5	White-6	Grey-11	Tan-9	Natural-10	Hole ±0.08	Panel Thickness	A2	A1	B	C	D	Tensile Strength(Yield) (min.)	Shear Strength (min.)	Pin Tensile Force (min.)	Standard Pack
	Part No.	Part No.	Part No.	Part No.	Part No.											
GCR32-1	20947	20950	20981	20984	20978	3.3	1.0-3.5	6.4	2.1	1.4	6.4	3.2	10KGF	15KGF	13KGF	1000
GCR32-2	20948	20951	20982	20985	20979		3.5-6.5				9.6					
GCR32-3	20949	20952	20983	20986	20980		6.5-9.5				12.7					
GCR40-1	20953	20956	20990	20993	20987	4.1	1.0-3.5	8.0	2.4	1.8	6.4	4.0	18KGF	20KGF	20KGF	1000
GCR40-2	20954	20957	20991	20994	20988		3.5-6.0				9.6					
GCR40-3	20955	20958	20992	20995	20989		6.0-9.0				12.7					
GCR48-1	20938	20941	20999	21002	20996	4.9	1.5-4.5	9.6	2.8	2.0	8.0	4.8	23KGF	32KGF	22KGF	500
GCR48-2	20939	20942	21000	21003	20997		4.5-7.5				11.2					
GCR48-3	20940	20943	21001	21004	20998		7.5-10.5				14.4					
GCR56-1	21020	21023	21029	21032	21026	5.7	2.0-5.0	12.0	3.4	2.2	9.6	5.6	40KGF	40KGF	40KGF	1000
GCR56-2	21021	21024	21030	21033	21027		5.0-8.0				12.7					
GCR56-3	21022	21025	21031	21034	21028		8.0-11.5				15.9					

Gecko International Co.							DATE	2015-12-8	DIMENSION	TOLERANCE
TITLE	CLINCH RIVETS						SCALE	FIT	L ≤ 4	±0.10
PART NAME	GCR	MOLD NO.	/	DRAW	PLK	UNIT	MM	4 < L ≤ 15	±0.20	
PART NO.	SEE TABLE	MATERIAL	SEE TABLE	DESIGN	PLK	VERSION	A2	15 < L ≤ 50	±0.30	
DWG NO.	/	COLOR	SEE TABLE	APPROVAL	FDL	VIEW		50 < L ≤ 100	±0.40	